

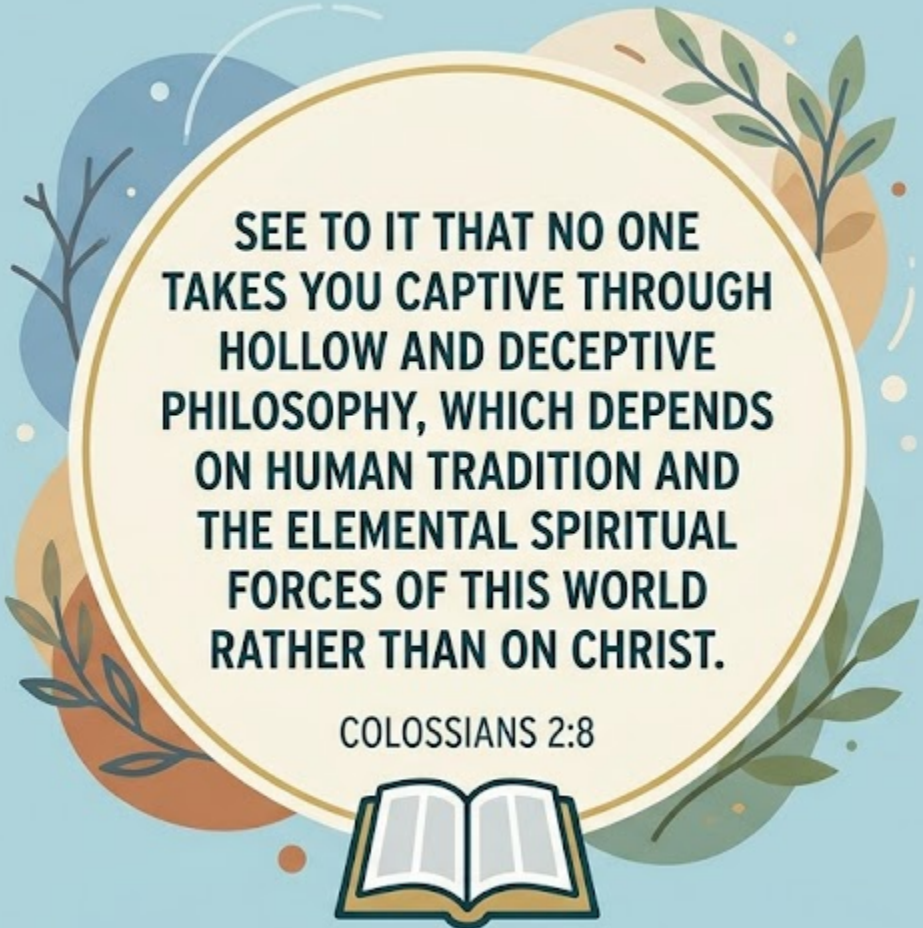


Apologetics

How to Reason with Compassion

Ken Pichette

EQUIP CLASSES



**SEE TO IT THAT NO ONE
TAKES YOU CAPTIVE THROUGH
HOLLOW AND DECEPTIVE
PHILOSOPHY, WHICH DEPENDS
ON HUMAN TRADITION AND
THE ELEMENTAL SPIRITUAL
FORCES OF THIS WORLD
RATHER THAN ON CHRIST.**

COLOSSIANS 2:8



EQUIP CLASSES



Philosophy for Christians... really?

Valuing, seeking, and walking in wisdom is a biblical imperative!

Understanding some basic philosophical concepts forms the foundation for all of the apologetic arguments.

EQUIP CLASSES

Philosophy is the *King*, and Theology is the *Queen*?





PHILOSOPHY



THEOLOGY

Philosophy provides the tools to properly understand the Bible and the world.

The Bible's propositions must be evaluated using logic – based philosophy.

Biblical worldview claims are *supported* by good philosophy, not undermined.

“All truth is God’s truth” – but truth claims are evaluated by using philosophy. ✨

“Philosophy” = *love and pursuit of wisdom*

BIBLICAL WISDOM: A GUIDE

Living a Wise and Value-Driven Life

VALUE WISDOM



Wisdom is more precious than rubies (PROVERBS 8:11).

1. Recognizes its supreme worth.
2. Acknowledges it as a gift from God.

SEEK WISDOM



If you seek it like silver... (PROVERBS 2:4).

1. Search for it diligently and with purpose.
2. Value instruction over gold (PROVERBS 16:16).

ASK FOR WISDOM



If any of you lacks wisdom, let him ask God... (JAMES 1:5).

1. Go directly to the ultimate source.
2. Express your need with humility.

LIVE WISELY



Conduct yourselves with wisdom toward outsiders... (COLOSSIANS 4:5).

1. Apply wisdom to daily life and actions.
2. Walk in the Spirit, not in folly (EPHESIANS 5:15).

SPECTRUM OF MORAL EXISTENCE

From internal to external foundations

ASSES

Who can be a Philosopher? - You don't need a PhD

QUALITIES OF A PHILOSOPHER

A Journey to Deeper Understanding

HUMILITY

Recognizing limits
(PROVERBS 16:16).



Recognizing limits
limits
(PROVERBS 16:16).

1. Acknowledges the limits of personal knowledge.
 2. Values instruction over pride.
- Open to correction.
 - Respects other perspectives.

A SENSE OF WONDER

If you look with wonder...
(PSALM 111:2).



If you look with wonder...
(PSALM 111:2).

1. Maintains child-like curiosity.
 2. marvels at the order of the universe.
- Sees beauty in complexity.
 - Driven to ask "Why?"

LIVING OUT THE PHILOSOPHY

Walk consistently in truth...
(EPHESIANS 5:15).



HEALTHY SKEPTICISM

Conduct yourselves with logic and weight and balance
(TITUS 1:9).



Conduct yourselves with logic...
(TITUS 1:9).

1. Avoids dogma and blind acceptance.
 2. Tests and questions all claims (1 THESS. 5:21).
- Demands evidence.
 - Remains open-minded, not cynical.

COMMITMENT TO RATIONAL THINKING

Apply logic to daily life...
(COLOSSIANS 4:5).



Apply logic to daily life...
(COLOSSIANS 4:5).

1. Uses sound logic and deductive reason.
 2. Builds a coherent worldview.
- Identifies fallacies.
 - Forms structured arguments.

SPECTRUM OF HUMAN ENQUIRY

From inner character to outward action.

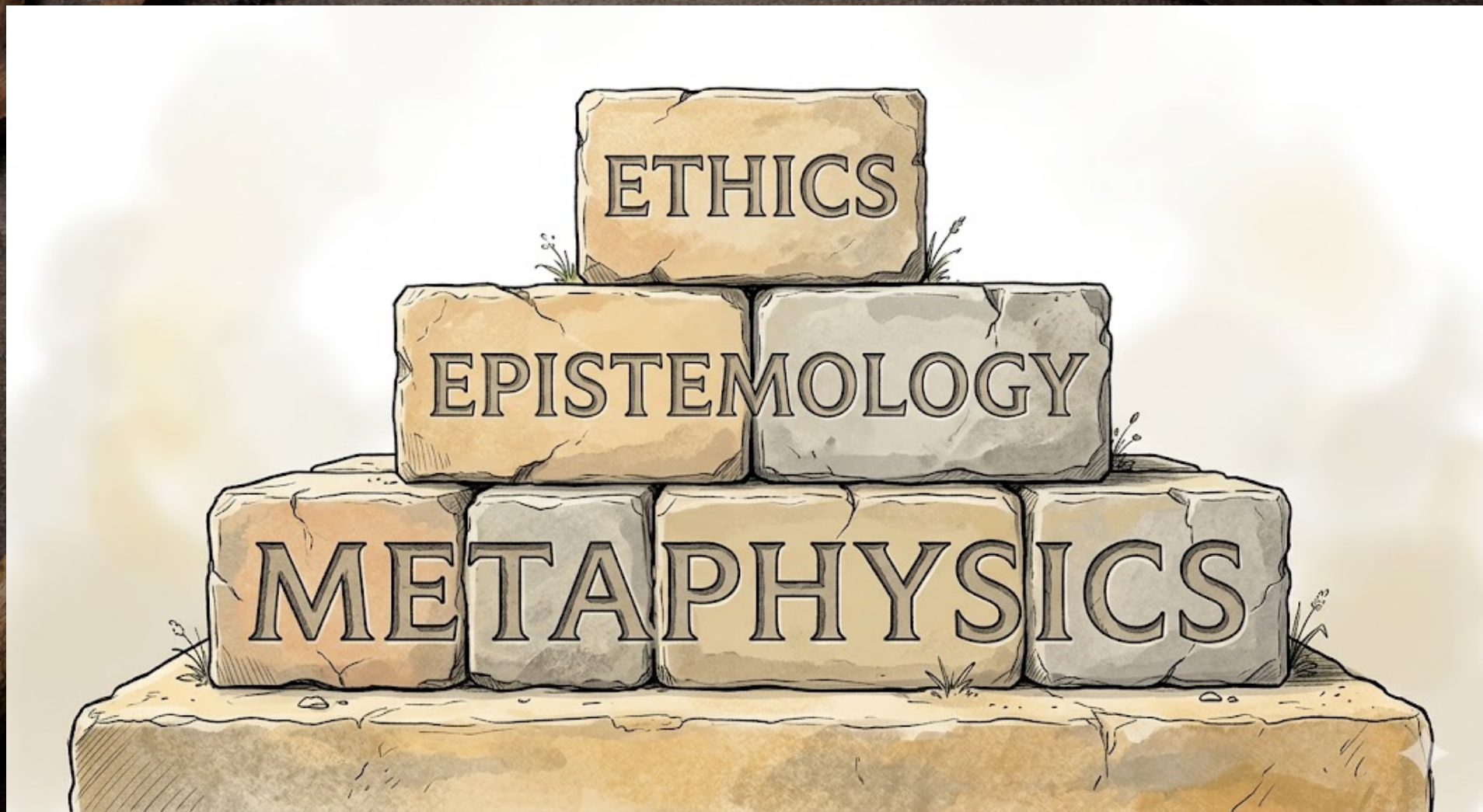
The Basic Philosophy Toolbox



There are only about a dozen key tools you need as a philosophical base for any apologetic argument using any of the methods.

- A basic understanding of how philosophers have viewed the nature and composition of the universe, the extent and pathways of human knowledge, and the origin and imperatives of morality.
- The use of logic to understand the world around us through both inductive and deductive means.
- The way in which different types of strong, persuasive arguments are constructed, presented, and analyzed.

EQUIP CLASSES




EQUIP CLASSES

THREE PRIMARY BRANCHES OF PHILOSOPHY


METAPHYSICS

BEING

- The fundamental nature of reality 
- Existence, time, space, causality
- Objects, properties, consciousness


EPISTEMOLOGY

BELIEVING

- The theory of knowledge 
- Nature, scope, and sources of belief
- Justification, evidence, truth

ETHICS

BEHAVING

- The study of moral principles 
- Right vs. Wrong, Good vs. Bad
- Guidance for conduct, values, and duty

THREE METAPHYSICAL VIEWS

Primary Reality: **MIND**

MATERIALISM



MATERIALISM

1. **MATTER IS THE ULTIMATE REALITY.**
2. The world is purely physical.
3. Consciousness arises from physical processes.

Primary Reality: **MATTER**

REALISM (DUALISM)



REALISM (DUALISM)

1. **TWO DISTINCT REALITIES EXIST: Matter and Mind.**
2. The physical and mental/spiritual exist independently.
3. Both are fundamental and real.

IDEALISM



IDEALISM

1. **MIND OR CONSCIOUSNESS IS THE ULTIMATE REALITY.**
2. Ideas and perceptions shape material existence.
3. The external world is a mental construction.

EQUIP CLASSES

EMPIRICISM



1. KNOWLEDGE COMES FROM SENSORY EXPERIENCE.
2. Observation and experimentation are the foundation.

RATIONALISM



1. KNOWLEDGE COMES FROM REASON.
2. Logical deductive reasoning is the primary source.

ANTI-RATIONALISM



1. REJECTS REASON AS THE ULTIMATE AUTHORITY.
2. Values non-linear, intuitive, or absurd ideas.

THREE DISTINCT PARADIGMS
Varying methods of truth acquisition

EQUIP CLASSES

THREE ETHICAL PARADIGMS

Varying views on the nature of morality

MORAL OBJECTIVISM



1. MORAL VALUES EXIST INDEPENDENTLY.
2. Certain actions are right or wrong for all people at all times.

MORAL RELATIVISM



1. MORAL STANDARDS ARE RELATIVE TO A GROUP.
2. Cultural norms and history determine morality; there is no single "correct" code.

MORAL SUBJECTIVISM



1. MORAL JUDGMENTS ARE PERSONAL.
2. Morality is a projection of an individual's unique feelings and perspectives.

SPECTRUM OF MORAL EXISTENCE

From external to internal foundations

EQUIP CLASSES

THE FOUR LAWS OF LOGIC: CORE PRINCIPLES OF REASON

Foundations of Rational Thought

1

LAW OF IDENTITY



A thing is identical to itself.

This law states that everything has specific, unchanging properties that define it.



2

LAW OF NON-CONTRADICTION



No proposition can be both true and false.

A statement cannot have opposing properties simultaneously.



3

LAW OF EXCLUDED MIDDLE



Any proposition is either true or false.

There is no neutral state between truth and falsehood.



4

LAW OF RATIONAL INFERENCE



In valid arguments, if the premises are true, the conclusion must follow logically.

Reason guides us from known truths to new knowledge.



FOUNDATION OF ALL SOUND REASON

From inner character to outward action.

EQUIP CLASSES

THE FOUR LAWS OF LOGIC: CORE PRINCIPLES OF REASON

Foundations of Rational Thought

1

LAW OF IDENTITY



"Recognizing truth:
'I am who I am'
(Exodus 3:14)

A thing is always identical
to itself.

Each unique concept
has specific,
unchanging properties.

2

LAW OF NON-CONTRADICTION



"Let your 'Yes' be 'Yes'
and your 'No' be 'No'
(Matthew 5:37)

A statement cannot be both
true and false at the same time
and in the same sense.

Logic rejects internal
contradictions.

3

LAW OF EXCLUDED MIDDLE



"Choose this day whom you
will serve"
(Joshua 24:15)

For any proposition, it must be
either true or it must be false.

There is no
intermediate
or neutral ground.

4

LAW OF RATIONAL INFERENCE



"Test everything; hold fast to
what is good"
(1 Thessalonians 5:21).

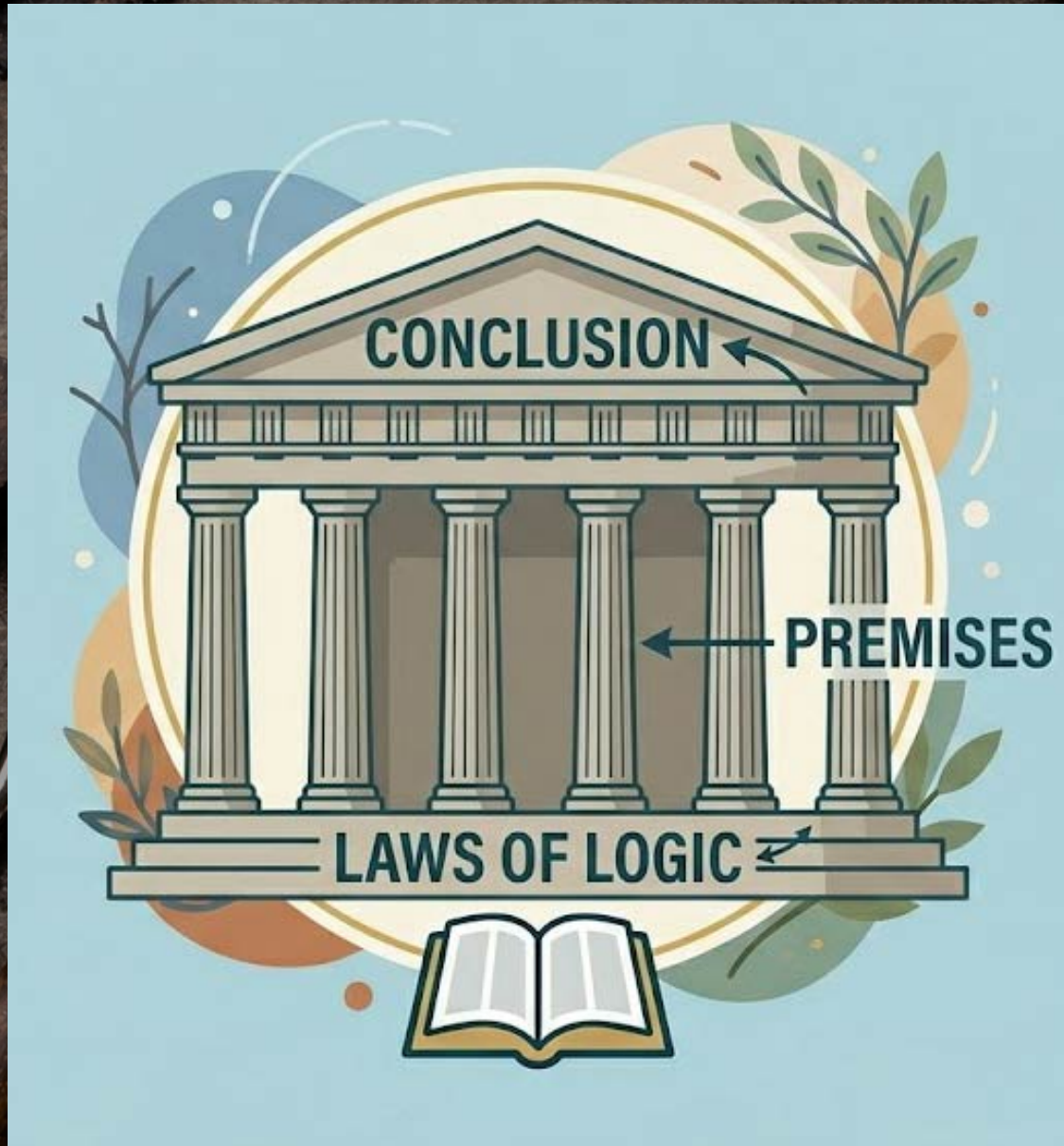
If one thing is true, then another
must also be true based on
logical necessity.

Logical valid arguments
allow us to infer new truths.

FOUNDATION OF ALL SOUND REASON

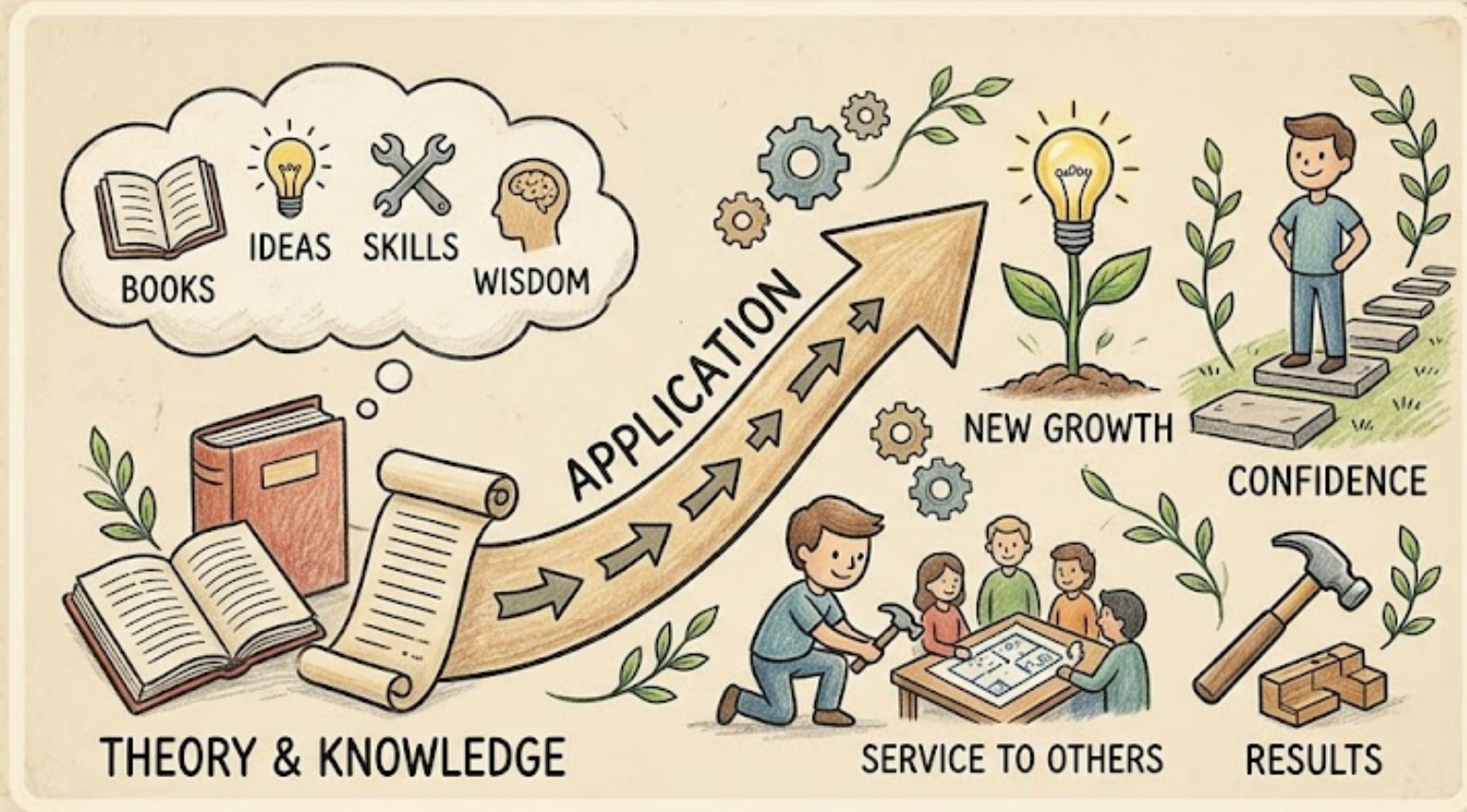
From inner character to outward action.

EQUIP CLASSES



EQUIP CLASSES

PRACTICAL APPLICATION OF KNOWLEDGE TO LIFE



EQUIP CLASSES

Apologetics Scenarios

Use your scenario to work through how you can **reasonably** and **effectively** defend the Christian worldview **without being threatening or offensive.**



EQUIP CLASSES



EQUIP CLASSES